



NOWRA
Golf &
Recreation Club

OFFICIAL CLUB BROCHURE

2026

WELCOME TO NOWRA GOLF CLUB

Nowra Golf Club is home to a picturesque yet challenging 18-hole golf course which is very popular in the Shoalhaven region.

The club is highly regarded for its unique course, well-appointed clubhouse, friendly atmosphere and excellent service. Your experience will be memorable no matter what you score!

Amazing views over the Shoalhaven River are only part of the course and clubhouse experience. Play a round and enjoy a refreshing drink from the licensed bar. The air-conditioned lounge overlooks the Shoalhaven River and the golf course. The Club Bistro is open Friday nights.

Two superb function rooms can accommodate more than 200 guests, making the clubhouse perfect for your special occasion. With a beautiful setting and dedicated staff at your service it's no surprise that our venue is popular for weddings and functions.

Membership at Nowra Golf Club is available and affordable. With its relaxed atmosphere and exciting golfing opportunities, this family club has much to offer. Ideally equipped to host any type of golf day, Nowra Golf Club has excellent staff and catering options to ensure a successful event.

Nowra Golf Club has much to recommend it. We invite you to visit us and experience our hospitality, facilities and golf course.

CONTENTS

- 2 Welcome
- 4 The Course
- 6 The Engine Room
- 8 Course Tour
- 12 How to Join
- 15 Benefits of Membership
- 16 Members' Golf
- 22 Reciprocal Golf
- 23 Visitors & Social Golf
- 24 Corporate & Charity Golf Days, Meetings & Conferences
- 28 Weddings, Functions & Special Occasions
- 30 How to Find Us
- 32 Bomaderry Bowling Club
- 34 Berry Bowling Club



**Premier
PUBLISHING**

14 Ellis St, South Yarra VIC 3141

T 03 7045 5189

E info@premierpublishing.com.au

W www.premierpublishing.com.au

Nowra Golf Club and Premier wish to thank the advertisers who appear in this publication for their support and wish them every business success. The contents of this brochure are believed to be correct at the time of printing, nevertheless, we cannot endorse and readers should not rely solely upon the accuracy of any statements or claims contained herein without prior consultation with the service provider.

THE COURSE

Situated in North Nowra, the golf course nestles between the Shoalhaven River and the surrounding bushland, where tees have been cut into the escarpment providing a unique outlook, high above the fairways.



The course is a 5,166 metre par 68 test for men, with two par 3s on the front nine and three par 3s and one par 5 on the back nine. Women play an equally testing par 71 layout measuring 5,050 metres.

Although shorter than many courses, Nowra Golf Course is none the poorer for it. Trading distance for tight driving lines makes for challenging golf. As does the pinpoint accuracy needed on the approach to relatively small greens from mature tree-lined fairways.

Do not expect to drive off every tee. Instead, expect to be challenged in your choice of clubs and your course management skills!

There are several signature holes on the course, but arguably its most memorable feature – apart from the riverside setting

– is the collection of excellent par 3s and some spectacular cave-like tees set into the sandstone. Nearest the pin competitions are never dull at Nowra!

Nowra Golf Course is popular with golfers and a haven for nature. Visitors may see some local residents like echidnas, lizards and wombats. There is also a wide variety of birdlife and lyrebirds can be seen on the course, as well as the kookaburras that remind you that your last shot wasn't all that good!

THE ENGINE ROOM

The course is maintained by a small staff of dedicated workers. Our Course Superintendent is Louie Sutherland and he is ably supported by David Pickup, John Courtney and new apprentice Jackson Ingram.

This small crew do a great job in presenting the course for regular competition play four days of the week and social play at other times. The staff are assisted by a group of dedicated volunteers.

A new irrigation system has been installed and soon all the greens will be automatically watered.

The course is looking magnificent, with both the fairways and greens looking very lush. There is not much "rough", but it is preferable to be on the fairway.



Hear Better. Live Freely.

At Freedom Hearing, we help you reconnect with the sounds that matter most. Our experienced audiologists provide personalised hearing care using the latest technology and a supportive, patient-first approach.

Are you a pensioner?

You may be eligible for a FREE upgrade valued at over \$4,290 per pair*

Ever exposed to noise at work?

You could be eligible for hearing aids for life—at no cost to you.

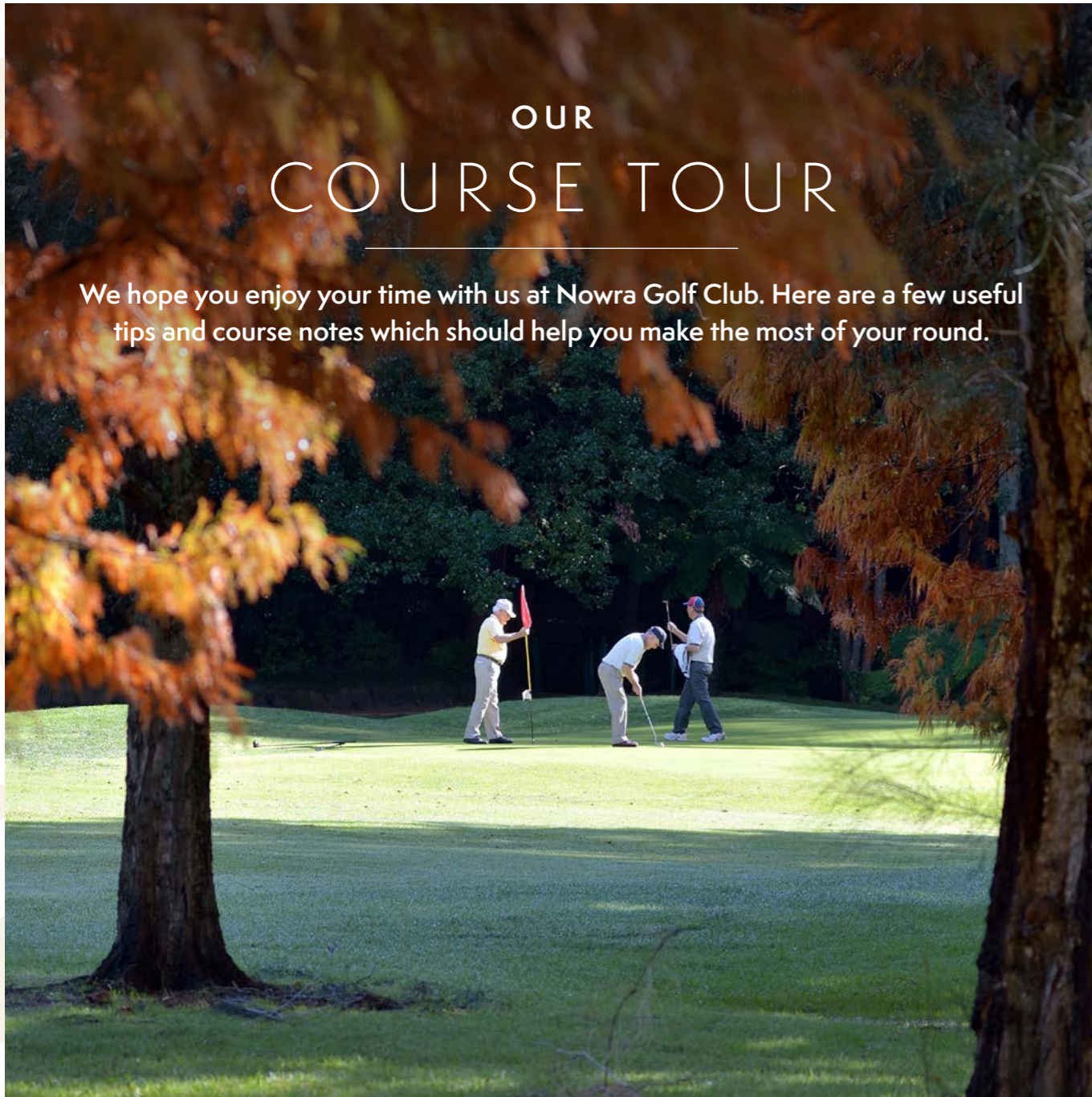


Start Your Journey to Better Hearing
Free Test, Free Trial, and Australia's **Lowest Price Guarantee.**
1800 689 085 | www.freedomhearing.com.au



OUR COURSE TOUR

We hope you enjoy your time with us at Nowra Golf Club. Here are a few useful tips and course notes which should help you make the most of your round.



Distances shown are from the Men's Blue Plates and the Women's Red Plates.

HOLE 1 - THE PINNACLES **BLUE 330M PAR 4. RED 327M PAR 4.**

A straight par 4 down a generous, tree-lined fairway invites a big drive, but caution is advised with danger lurking in the form of a lateral hazard (concrete drain) which crosses the fairway at approximately 200 metres. The approach shot is to a slightly raised, two-tiered green with fall away at the rear and right to a hazard.

HOLE 2 - LYREBIRD LAIR **BLUE 303M PAR 4. RED 303M PAR 4.**

A severe dog-leg right par 4 with that same hazard (concrete drain) seen on the opening hole at approximately 160 metres. By clearing the drain, you have a straight-in approach to a slightly sloped back-to-front, elongated green which is guarded on the left by a bunker.

HOLE 3 - HIGH TEE **BLUE 295M PAR 4. RED 295M PAR 4.**

A rather sharp climb to an elevated tee on the escarpment, which intimidates the player to some degree with the need for an accurate drive for a good position to make an approach to quite a small green. There is a bunker on the left and the green is slightly elevated. A four is always rewarding.

HOLE 4 - RIVER BEND **BLUE 141M PAR 3. RED 131M PAR 3.**

This can be a scary experience for the novice. Not a long par 3, but intimidating because the prevailing winds can cause even the best hit shot to flirt with the out of bounds all the way down the left-hand side. A fairly narrow green makes a small target. Expect long putts with subtle breaks.

HOLE 5 - AZALEA RIDGE **BLUE 337M PAR 4. RED 336M PAR 4.**

A straight par 4, where the invitation is for a big drive which makes for a challenging approach to an extremely elevated, wide, shallow green with subtle breaks to the river. Most golfers hope for a good up and down.

HOLE 6 - RIVER VIEW **BLUE 361M PAR 4. RED 361M PAR 5.**

Around the corner from the 5th is this picturesque hole with out of bounds on the right-hand side to the river. With a good drive, the approach requires accuracy to avoid running through a green which is slightly elevated and has subtle breaks.

HOLE 7 - TALL TIMBERS

BLUE 302M PAR 4. RED 300M PAR 4.

Though not long, this hole fools a lot of players. It requires a good drive down the middle avoiding the run-off to the right. With the correct club selected and the right-hand bunker avoided, a birdie is not out of the equation.

HOLE 8 - DEVIL'S LANDING

BLUE 101M PAR 3. RED 101M PAR 3.

A unique par 3 experience, but has some bite if missed. A simple approach shot from an elevated tee to an elevated green. This hole produces many 'Aces', but also many bogeys.

HOLE 9 - THE CAVE

BLUE 331M PAR 4. RED 331M PAR 4.

Many photos are taken of this hole because of the view to the river and clubhouse and it is often used as the long drive hole because of the elevated tee set back into the cliff face. A big straight drive is rewarded with a shot into a narrow green which can spin a short ball back down to the front requiring an 'up and down' for par. Your putting nerves are tested here.

HOLE 10 - PORTER'S POND

BLUE 307M PAR 4. RED 301M PAR 4.

A fairly straight par 4 that requires a considered approach. A dam on the left can catch the wayward shot. Some trouble at the front with a bunker on the right side of a long green. Subtle breaks are the order of the day on this green.

HOLE 11 - ROCKY GULLY

BLUE 310M PAR 4. RED 310M PAR 4.

A short climb up to the tee of this par 4 with accuracy needed here. A slight dogleg right will set up a challenging approach over a very large bunker on the left, sometimes leaving a long putt with a lot of break. The medal pin position at the back left is extremely challenging.

HOLE 12 - DECEPTION ALLEY

BLUE 170M PAR 3. RED 167M PAR 3.

A straight shot between the tree lines will get you to this green with a very narrow target and bunkers on both sides. A lot of bogeys are scored here.

HOLE 13 - JACARANDA DRIVE

BLUE 289M PAR 4. RED 281M PAR 4.

One of the shorter par fours, but there are trees both sides to catch the wandering ball and the dreaded 'bear pit' to get over. If you have missed all that and the two bunkers, a well-positioned first putt below the hole should be rewarded.

HOLE 14 - BOX GUM BEND

BLUE 495M PAR 5. RED 422M PAR 5.

This par 5 has brought a lot of good players undone. The drive must make the fairway to get a chance at a well-positioned second into the corner, preferably to the right side of the fairway. Then an accurate approach is needed to a very small green with lots of subtle breaks. Easy, on a good day!

HOLE 15 - THE ROAD HOLE

BLUE 408M PAR 4. RED 406M PAR 5.

Every great golf course has a road hole and this is Nowra's. With a straight long drive to avoid the out of bounds on the right, the green is reachable in two for the longer hitters, but most have to take three. Bunkers guard the green on both sides and a hazard awaits on the left. A flat green rewards accurate putting.

HOLE 16 - FIG AND ROCK

BLUE 153M PAR 3. RED 147M PAR 3.

The prettiest hole anywhere and the course signature hole which presents the player with a wonderful challenge as all the trouble is at the front with a bunker on either side to negotiate and then a right to left putt with a lot of swing.

HOLE 17 - GREENKEEPER'S LODGE

BLUE 202M PAR 3. RED 200M PAR 4.

This long par 3 (for the boys) from an elevated tee, with a large bunker covering most of the approach, forces the player to attempt a big hit over the top and inevitably some players go long. Once on the green, a long putt can be subject to a lot of break. Bogeys are not uncommon.

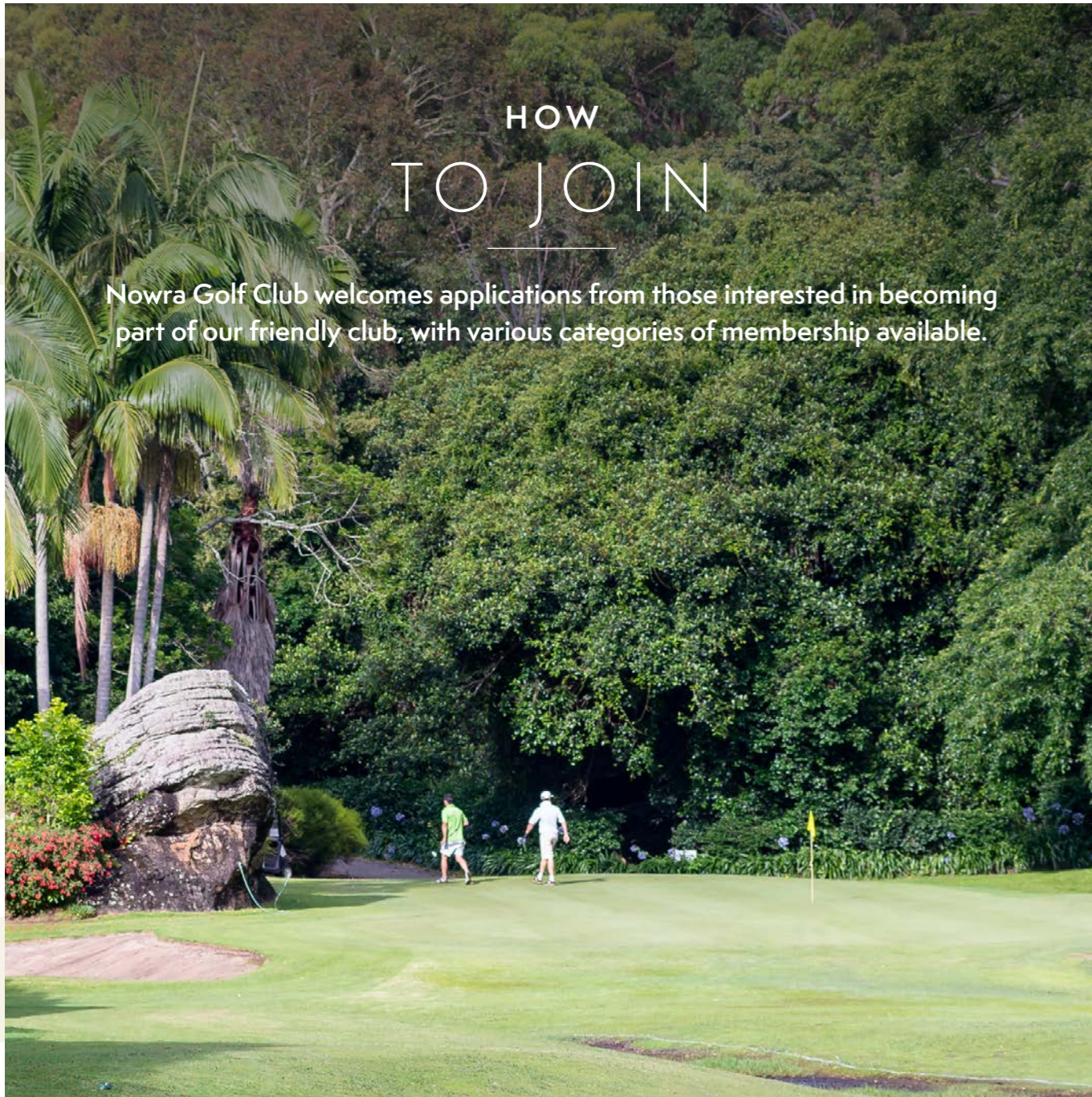
HOLE 18 - HANGING ROCK

BLUE 331M PAR 4. RED 331M PAR 4.

A hole that has ruined a lot of rounds. A severe dogleg left with the turn causing the straight hitter to tempt a penalty of the trees with 150 metres still to go. An approach from anywhere at the corner needs to negotiate the bunker guarding the left side of the green and then the ball tends to slide off to the right; not easy. The wise player putts uphill on this green.

HOW TO JOIN

Nowra Golf Club welcomes applications from those interested in becoming part of our friendly club, with various categories of membership available.



**Nowra is a wonderful place to spend time whether golfing or socialising.
It offers an outstanding 18 hole course set in a breathtaking location.**

If you love your golf, the great outdoors, spectacular scenery and sharing your passion with easy going, like-minded individuals, then this is the club for you!

Golf is one of the easiest ways to meet new people. Feel confident you can join Nowra Golf Club without knowing any members. All you need to do is join and our friendly members and staff will make you feel welcome. Many of our members have made some of their best friends through playing at Nowra Golf Club.

Club membership is open to players of all ages and abilities and the good news is it remains open to new applicants.

Members can chart their continual improvement by gaining an official Golf Australia handicap, recognised at golf clubs worldwide. As a member, you will almost certainly find

yourself playing more golf and your handicap will fall as a result. And as all golfers know: the better you play, the more you will enjoy your game.

The clubhouse atmosphere matches the relaxed course setting. There are spacious lounge areas and an outside area that is an attraction in itself with tranquil surrounds.

Friday nights the Bistro offers quality dining. Friday is also Nowra's eagerly awaited "club night". Raffle tickets go on sale at 6pm with the draws being made from 7pm, offering the chance to win vouchers and support local business at the same time. The trivia questions are another added interest.

Clubhouse facilities include an ATM, Keno and poker machines for those who like a flutter.

Fancy becoming part of the club? This is a summary of the membership categories:

GOLD

For the keen golfer who wants to experience the best in club golf. May play in all applicable competitions. Benefits from lower standard competition fees and social green fees.

BRONZE

For the time-poor but passionate golfer who cannot play every week but wants to maintain a handicap. Pay a lower annual membership, but higher rates for standard competition fees and social green fees.

PLAYING SOCIAL MEMBER

Social golf only. Lower membership price and lower rate for social green fees, but no administration of handicap and not entitled to play in club competitions.

Current subscription rates can be viewed on the club website: www.itsmyclub.com.au/nowra-golf-club-2/ which also includes a Nomination for Membership form that can be downloaded and completed before being returned to the Office. For any questions about membership, please call the Pro Shop on (02) 4421 2249 or Bomaderry Bowling Club on (02) 4421 2733.

JUNIOR

Aged under 18 years, with special rates for students and apprentices aged under 25.

REMOTE

Playing rights but must live more than 100km from the club.

SOCIAL MEMBER

No golf playing rights. Use of the clubhouse facilities only.

Additionally, members in the golfing categories can pay an annual lump sum to eliminate the social green fee payment for the period of their membership.

BENEFITS OF MEMBERSHIP

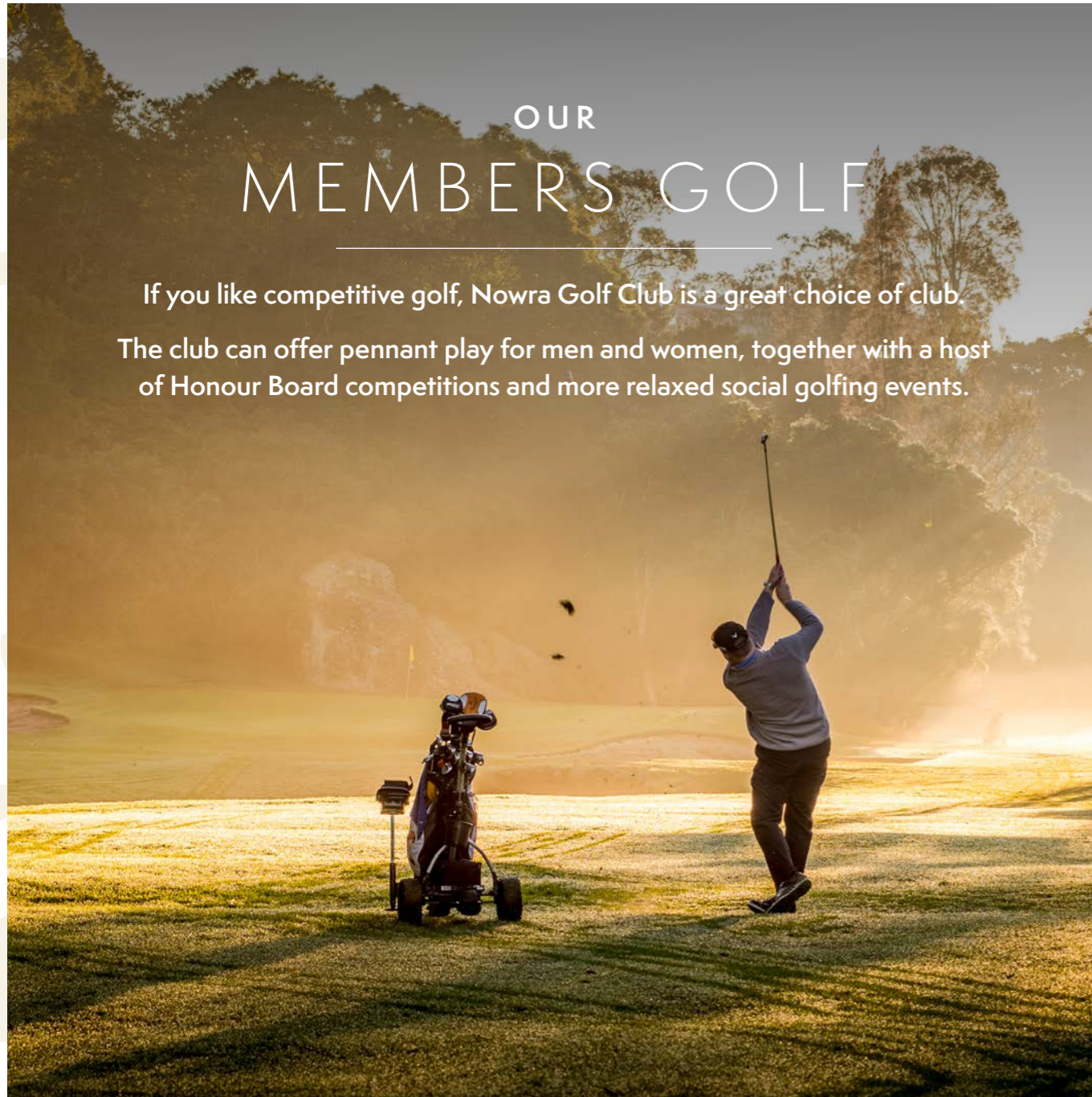
There are many good reasons to become a member of Nowra Golf Club. Here are just a few of the most compelling:

- Enjoy priority access to a great course which is superbly maintained, highly-regarded and a delight to play on
 - An active Golf Australia handicap
- Play as many times as your membership category allows. The more you play the better the value
- The chance to represent Nowra against other clubs in annual interclub pennant competition
- The chance to play in countless club events throughout the year, many providing the opportunity to win trophies and prizes
- Lots of social and less serious golf, providing the chance to enjoy the game in a relaxed atmosphere
 - Enjoy reciprocal golf at other clubs
 - New members can easily join in one of the club's various playing groups
- A simply stunning location next to the Shoalhaven River, making it a great place to bring guests for a game of golf or a social drink
 - Friendly and welcoming members, many playing an active part in the club
- Great clubhouse atmosphere, with specially organised social events throughout the year
 - Membership to Bomaderry Bowling Club and Berry Bowling Club is also included.

OUR MEMBERS GOLF

If you like competitive golf, Nowra Golf Club is a great choice of club.

The club can offer pennant play for men and women, together with a host of Honour Board competitions and more relaxed social golfing events.



There is no competition more important to clubs than the annual pennants, where clubs play a series of matches against their neighbouring clubs to win the pennant.

Nowra's men enter a team in the Shoalhaven Shield, a match play pennant competition played between all the Shoalhaven clubs and is open to all handicaps. There is also a team in the White Horse Cup, which is played throughout the Illawarra and Highlands. The region's longest running interclub matchplay competition, which can be enjoyed by players of all abilities, with a maximum permitted handicap of 24.

Women's Golf are equally passionate about interclub golf, fielding a team in the Women's Golf Illawarra pennant competition.

As well as the regular weekly competitions at Nowra there are several Honour Board competitions to be played for. The Club Championships are the highlight of the golfing year and are eagerly contested.

The Club Champions can then represent their club against their peers in the Golf Illawarra Champion of Champions.

Within the club, the main competition day is Saturday for men and women. Women also enjoy a competition on Thursdays and the men on Wednesdays. A social group of golfers, the NAGAS, play a 12-hole competition on Mondays, commencing at midday.

A beginners group for women is available every Friday morning (8.30am in Summer and 9.30am in Winter) for those wishing to commence golf. The group is managed and

instructed by Jill Levi who has been playing for many years and has been Club Champion on many occasions. Instruction includes the skills and etiquette of the game and clubs will be supplied if needed. Please contact the Pro Shop on (02) 4421 2249 if interested.

The Veterans, both men and women, play every Tuesday. The Veterans also play for a winner take all Jackpot every Tuesday on the 8th hole. Visitors are most welcome.

Members also play in Veteran's tournaments that are held throughout New South Wales all year round as well as Interclub competitions.

Men's Golf play for a Jackpot on Wednesdays & Saturdays, where the lucky member whose ball finishes within 30cm of the designated hole takes the Jackpot, which is often up to \$1,000.

With other groups also enjoying regular play, potential new members should have no worries about finding playing partners.

With mixed golf, twilight golf during daylight savings and special events, there are plenty of opportunities for golfers who enjoy the social side of playing golf more than the competitive element. There is no rule, however, to say that you can't enjoy both!





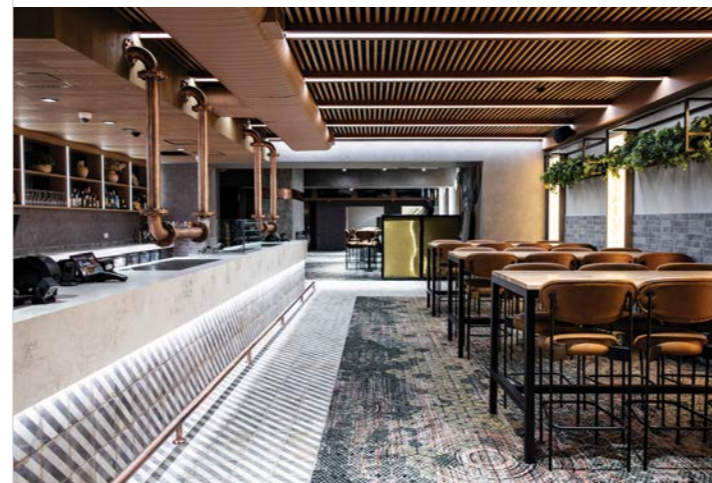
The Summer 9 Hole competition is very popular and social members can enter too – you don't need to be a Playing Member.

Nowra members generously give of their time to promote and improve the club they love, a tradition that dates back to the club's very early days. In addition to the regular Monday morning working bee, there are other working bees for specific projects, which add those extra finishing touches to the hard work of the club's green keeping staff in keeping the course looking at its picturesque best.

Members also support events such as the annual breast cancer charity day, where the club's women players don pink

outfits and enjoy a competition while at the same time raising money for a charity close to many people's hearts. Women's Golf have a library in their change room which also raises funds for breast cancer.

There is plenty of friendly banter in the clubhouse after competitions. Whether or not there are social events on the calendar, Nowra is a very friendly club and a great place to socialise.



Where Craftmanship Meets Innovation

We provide high-quality, cost-effective joinery services for commercial and residential projects across Shoalhaven and surrounding areas.

Specialising in:

- Shop & Office Fit Outs
- Clubs and Pubs Fit Outs
- Commercial Kitchens
- Medical Centers
- Residential Kitchens and Wardrobes

0429 112 022
richard@sccj.com.au
www.sccj.com.au



Discover our Inspirational Ideas, Worldwide Tours Just For You

From luxury voyages to boutique adventures, each journey is hand-picked to deliver unforgettable, one-of-a-kind experiences

sccruiseandtravel.com.au

21 Kinghorne St, Nowra 2541, NSW
info@sccruiseandtravel.com.au
1300 136 044

OUR RECIPROCAL GOLF

Nowra Golf Club enjoys reciprocal relationships with a number of golf clubs across Australia.

These provide added value to memberships and allow Gold members to enjoy golf on other fine courses at subsidised rates while away from home.

When visiting any of the clubs listed below make sure you bring proof of membership of Nowra Golf Club. Always consult the office before planning a trip regarding current benefits and to check the current updated list.

RECIPROCAL CLUBS (NSW UNLESS STATED):

- Belconnen Magpies Golf Club (ACT)
- Chatswood Golf Club
- Cronulla Golf Club
- Geraldton (WA)
- Gold Creek Country Club (ACT)
- Kurri Golf Club
- Merewether Golf Club
- Riverside Golf Club (TAS)
- Rosedale Golf Club (VIC)
- Tasmania Golf Club (TAS)
- Tocumwal Golf Club
- Vines Golf Club (SA)
- Warringah Golf Club
- Wodonga Golf Club (VIC)
- Yamba Golf Club
- Gold Creek (ACT)

VISITORS & SOCIAL GOLF

Social golfers are very welcome at Nowra Golf Club. A great golfing experience and a warm welcome await.

Members of other clubs with official GA handicaps are invited to play in Nowra's competition days (upon payment of the applicable fees).

The following list gives social golfers and club golfers interested in playing in Nowra's competitions some idea of the weekly schedule.

Please note: times are subject to change and bookings are essential to avoid disappointment.

MONDAY Social golf all day. NAGAS play at noon.

TUESDAY Veterans. Men & Women 8.30 am shotgun start (Visitors welcome). Social golf after 1pm.

WEDNESDAY Men's comp (Visitors welcome).

THURSDAY Women's comp am (Visitors welcome). Social golf after 10 am.

FRIDAY Social golf all day.

SATURDAY Men's and Women's comp (Visitors welcome). Social golf where space allows.

SUNDAY Social golf.

The club welcomes enquiries from visiting groups and is happy to assist with a package which suits your requirements. Motorised carts and pull buggies are available to hire, as are sets of golf clubs.

For those able to play outside peak times there are often enticing offers such as unlimited twilight golf late in the afternoon (see website for details) for a great low rate.

Enjoy the golf and stay for a refreshing drink in the clubhouse, where you will find our members and staff equally welcoming. The whole experience is sure to want you coming back for more.

To book your game please call the Golf Shop on (02) 4421 2249.

CORPORATE & CHARITY GOLF DAYS MEETINGS & CONFERENCES

Nowra Golf Club is a popular choice for charity and corporate golfing events.

With a spectacular course, an easy-to-reach location in the heart of the Shoalhaven region, excellent clubhouse facilities, great food and friendly, helpful staff who will go out of their way to ensure the event is a success, all the ingredients are there for a memorable day.



Don't worry if you have never hosted a golf day before, the club's expert team can take care of the organisation for you and suggest an appropriate format so that everyone feels involved and enjoys the event. Discuss your needs and budget and they will take care of the rest, even down to scoring!

The 18-hole course promises an invigorating and memorable test. It is one of the best-loved layouts in the Shoalhaven region. Everything you need is provided on-site and the club has a fleet of 18 golf carts available for hire (pre-booking is essential) as well as sets of clubs and buggies.

For larger groups, a shotgun start – when all players tee off on different holes simultaneously – can be arranged. This means your corporate golf guests all complete their rounds at roughly the same time and can then eat and mingle in the clubhouse without waiting for the later starters.

A little friendly competition always goes down well. Nearest the pin and longest drive markers can gladly be provided and if there are some good prizes on offer for your golf day participants, their time with you is sure to last long in the memory.

The club also has the facilities for groups to hold a raffle and/or charity auction to maximise the fundraising capabilities of the day.

Corporate golf day organisers are welcome to place signs on the course at agreed places to gain exposure for their company or event, or set up sales stands in the club's function room. Or you could consider "selling" holes (having them sponsored for the day) which is a great way for charities to raise money for their good cause.

The post-round get-together is sure to be as memorable and enjoyable as the time spent on the course. Nowra Golf Club's hospitality team come highly recommended and whether choosing a barbecue in our gardens or a function in our Bistro you will remember the food just as fondly as you will the golf!

If you have delegates coming from the city or out of the region and want to make the right impression, why not combine some golf with some local sightseeing? The club can suggest itineraries, the magnificent Shoalhaven River right on the doorstep and some golf, great food and a cruise down the river to round off the day could quite easily turn prospective clients into future business partners!

Corporate clients will welcome the club's refreshingly flexible approach and the numerous opportunities to team up with Nowra Golf Club.

For those looking to raise awareness of their brand on an ongoing basis, there are opportunities to sponsor individual holes or club competitions and for advertising in-house, on scorecards, in club publications or on digital platforms.

With its wonderful location, the clubhouse is also the perfect venue for meetings and presentation equipment can be set up to help get that important sales message across.

For more information on hosting a golf day or meeting at Nowra Golf Club, contact Bomaderry Bowling Club by phone: (02) 4421 2733 or email: bbc@bomaderrybowling.com.au.

Protecting what matters most in the Shoalhaven

Experience the Macey Difference

For over four decades, we've been the trusted choice for business owners throughout the Shoalhaven, Southern Highlands, Macarthur and Illawarra, ensuring peace of mind with comprehensive insurance solutions.

Every day, we provide our clients with unparalleled support, expert advice, and tailored protection strategies, empowering them to navigate business confidently.

Experience the Macey difference – where quality service meets unmatched insurance expertise.

BUSINESS INSURANCE | CLAIMS MANAGEMENT | RISK MITIGATION & ADVICE



Your Risk. Our Business.

WEDDINGS, FUNCTIONS & SPECIAL OCCASIONS

With its spectacular, convenient and easily accessible location, excellent facilities and a friendly, helpful team dedicated to making your event a success, the River View Function Centre at Nowra Golf Club represents the perfect choice for that special occasion.

Boasting a number of versatile function spaces, the club offers options to suit every event, be it a wedding, birthday milestone, reunion, engagement, anniversary or retirement celebration, wake, sports club presentation, school ball, meeting, AGM, corporate seminar, conference, development day, product launch, team building day, Christmas party, or high tea.



The River View Function Centre – located on the banks of the beautiful Shoalhaven River with cliff faces and the Shoalhaven Bridge on one side and sweeping fairways and manicured gardens on the other – is a simply stunning location. If you have been looking for somewhere with that wow factor then your search is over!

The venue is sure to impress guests and provides a magnificent backdrop for those treasured photos which will help you remember that special day.

Attentive, experienced and friendly staff are on hand to take all the stress out of co-ordinating your important day and turning it into a memorable experience, so function hosts can relax and soak up the delightful views or spend quality time with their guests.

Choose the function space to suit your special occasion. The River View room overlooks the Shoalhaven River and can seat 150 people for a dinner function. This room can also be arranged to suit a seminar, training day or corporate event.

The Fairway View room can seat 60 people for a dinner function. It can also be set up to suit a corporate event.

Both these rooms can be combined with the removal of the dividing wall which reveals a large room, with outstanding views across the beautifully maintained golf course to the escarpment on one side and the ever-changing Shoalhaven River on the other. This option allows more than 200 guests to enjoy a function in comfort.

Couples holding their wedding reception at The River View Function Centre may also get married on the course. Be

surrounded by birds, trees and sweeping greens while taking your vows. If it sounds idyllic, that's because it is!

The golf course not only offers beautiful locations for photos but also makes the transition from the ceremony to the reception effortless.

Not only is it a truly romantic and memorable setting in which to say your wedding vows, but there's the added bonus of not having the logistical nightmare of ferrying guests between two venues.

A staff member can take you and your wedding party around the course for photos, while you have peace of mind that your guests are enjoying some time to catch up and mingle in the bar area before the reception.

Ceremonies can take place on our course from 3:30pm, this ensures that no golf is to be played during your wedding on the tees surrounding the ceremony. Wet weather alternatives are available.

Should you have something special in mind, the River View Function Centre offers flexibility and can tailor any package to suit your requirements.

Discover The River View Function Centre, Shoalhaven's Best-Kept Secret...

Contact the club today to discuss your individual requirements. Come in and meet the team or call Bomaderry Bowling Club on (02) 4421 2733. More information can be found on the dedicated website, www.riverviewfunctions.com.au, on which can also be found a detailed wedding booklet to download.

HOW TO FIND US

**Nowra Golf Club is located on the NSW South Coast,
around an hour and a half by car from Sydney.**

The club is delightfully situated in North Nowra,
on the banks of the Shoalhaven River.

DIRECTIONS FROM SYDNEY

Follow the A1, M1 and Princes Highway southbound towards Nowra (approx 157km). After crossing Bomaderry Creek (but before crossing the much wider Shoalhaven River), turn right onto Illaroo Road (signposted North Nowra, Shoalhaven Zoo). After 250m turn left onto Fairway Drive and follow this road to the end (around 800m, river on your left), where you will arrive at the club car park immediately in front of the clubhouse.

DIRECTIONS FROM NOWRA

Turn left onto Illaroo Road immediately after crossing the bridge over the Shoalhaven River (signposted North Nowra, Shoalhaven Zoo). After 250m turn left onto Fairway Drive. The club, car park and clubhouse are at the end of this road (around 800m, river on your left).

CONTACT INFORMATION

Nowra Golf Club, Fairway Drive, North Nowra

POSTAL ADDRESS

Nowra Golf Club
C/- Bomaderry Bowling Club, Locked Bag 3008
Nowra, NSW 2541

EMAIL

info@nowragolf.com.au

ADMINISTRATION, FUNCTIONS AND ACCOUNTS

Phone: Bomaderry Bowling Club (02) 4421 2733
E-mail: bbc@bomaderrybowling.com.au

GOLF SHOP

Phone: Nowra Golf Club (02) 4421 3900
E-mail: proshop@nowragolf.com.au
Website: www.itsmyclub.com.au

SOCIAL MEDIA

Keep up to date with all the latest news from
the club by liking our Facebook page:

facebook.com/NowraGolfClub



Serving the South Coast for over 130 years



Chapel at Bollerang House Wandandian

- Genuine customer service
- More choices for all budgets
- Modern chapel facilities at

Nowra & Wandandian

Give your family the gift of knowing your wishes

- Reduce stress and family conflict
- Reflect your personal values
- Provide peace of mind
- Capture important information
- Lock in today's prices

Call us to book a
Pre-Planning Appointment

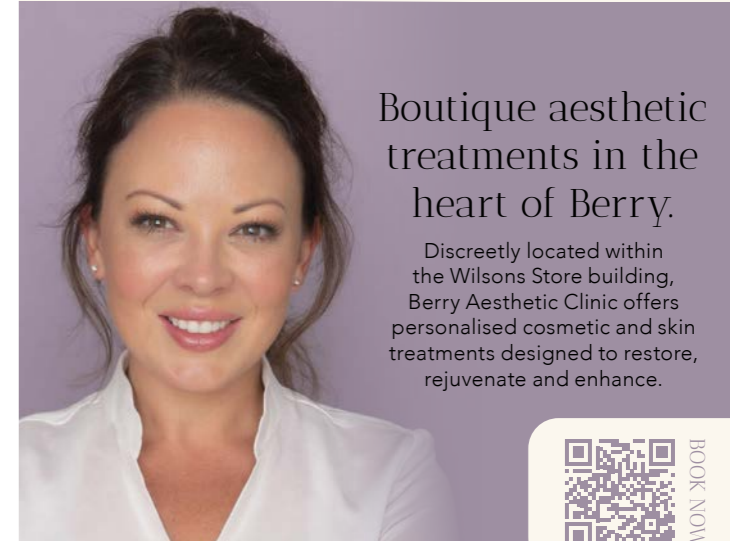


Available 24/7 on
(02) 4423 2333

52 North St, Nowra

✉ info@hparsons.com.au
🌐 hparsons.com.au

BERRY AESTHETIC Clinic



Boutique aesthetic
treatments in the
heart of Berry.

Discreetly located within
the Wilsons Store building,
Berry Aesthetic Clinic offers
personalised cosmetic and skin
treatments designed to restore,
rejuvenate and enhance.



BOOK NOW

Led by experienced Aesthetic Registered Nurse Tanya
Rose, treatments are tailored with precision, safety and
artistry to achieve refined, balanced results.

Services include:

- Wrinkle reducing & muscle relaxing treatments
 - Volume restoration & facial balancing
 - Rejuran & bio-remodelling treatments
 - Skin needling
 - Clinical facials & chemical peels

Proud stockists of SynergieSkin & AiryDay SPF.

www.berryaestheticclinic.com.au

SHOP 5/97-99 QUEEN STREET, BERRY NSW, 2535 | 0493 107 288

BOMADERRY BOWLING CLUB

Open seven days from early 'til late, Bomaderry Bowling Club prides itself on being a premier club on the South Coast.

Located in the north of the Shoalhaven, the club has been renovated with modern features and amenities and includes several Bars, a Bistro, plus large event/function spaces and plenty of meeting rooms. Let's take a tour of what the club has to offer:

BOWLING

Bomaderry's male and female bowlers enjoy an active calendar and both enter teams in the annual pennant competitions and other events run by their respective bowling associations.

Saturday morning is one of the main competition days of the week and the first Monday of each month sees a men's pairs event that carries a large cash prize (entry fee required).

Women's Social Bowls is played on Tuesdays and Thursdays, starting at 9am. Members enjoy Mixed Social Bowls on Tuesdays and Thursdays starting at 1pm, as well as on Saturday afternoons (numbers permitting) from 1pm (May-September) and 5pm (October-April).

For those new to the game, or those wishing to improve their skills, a bowls coach is available for members and free coaching is available on Wednesdays from 2pm. Bowls can be provided.

Bowls is a great social sport and if you've never tried barefoot bowls before, you should give it a go! Bowling clubs all over Australia have been gripped by the phenomenon in recent

years. Barefoot bowls is perfect for beginners, offering a great social activity for your next birthday party, family get-together or corporate or team building event. It is an enjoyable, fun way to spend a lunchtime or evening and the perfect ice-breaker. The club would be delighted to tailor a package to suit your needs.

For all bowling enquiries, contact the club on (02) 4422 3577 or (02) 4421 2733 for more information. Visitors are most welcome.

The men's bowling section has its own Facebook and Google pages. Visit www.facebook.com/BomaderryBowls

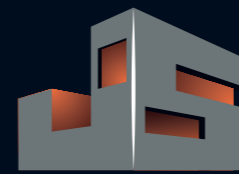
BISTRO

Come along and experience the great menu in the Bistro at Bomaderry Bowling Club, which offers value dining in a relaxed setting.

The Bistro is open for lunch and dinner seven days a week. There are lunch specials every day. Members can enjoy monthly two-course specials at mouth-watering prices.

Eating out is affordable whichever day you choose to visit, but on Cheap Tuesday you can enjoy even greater value on dinner specials.

The menu features value and variety and can be viewed on the club website: www.itsmyclub.com.au/bomaderry-bowling-club-2-2/



Custom Designed Builds to
Award Winning Standards

JAMIE SHAW BUILDING

NEW HOMES • RENOVATIONS • EXTENSIONS



Jamie and his team consider every build an opportunity to showcase their skills. Since they're proud of their craftsmanship, they set high standards and aim to exceed them. Jamie's passionate about quality, so he only employs people who match his commitment.

Nothing gives them greater pleasure than seeing your smiles when you first inspect your new home!

Dine in the Bistro and we think you will be pleasantly surprised. You can enjoy a fabulous meal without the price tag and will see exactly why Bomaderry Bowling Club really is worth going out of your way for!

FUNCTIONS AND SPECIAL OCCASIONS

Bomaderry Bowling Club is fully committed to offering a professional, customer-focused function service to all clients who inquire, book and hold functions at the club.

The club would love to host your special day and a memorable experience for both you and your guests is assured.

An extensive menu choice features a fresh selection of the region's finest foods. Alternatively, the club's chefs can tailor a menu to tantalise and indulge you and your guests.

Function facilities also provide for room decorations, co-ordinated table settings and individual table menus.

Finding a room just right for your special occasion is easy too, with a range to choose from. Anything from the smallest function right up to the grandest wedding can be hosted in comfort and style. This is the choice of rooms available:

- Sunrise Room – 150 guests
- Blue Gum Room – 40 guests
- Board Room – 15 guests
- Wattle Room – 10 guests

Visit the club website – www.itsmyclub.com.au/bomaderry-bowling-club-2-2/ and take a look at the all-inclusive package that caters for your every wish. This package is designed to help you create that very special atmosphere that you can share with your guests and make your special occasion truly memorable.

The club's function specialists invite you to make an appointment to sit down and discuss your needs for your special day to make sure it turns out just the way you had dreamt it. Call today on (02) 4421 2733 for more information and to make an appointment.

AT THE HEART OF THE COMMUNITY

At Bomaderry Bowling Club it's not all about having a good time, however. It's also about making a difference and the club is at the heart of its local community.

SOCIAL EVENTS

There is always something going on at Bomaderry Bowling Club. There are often social events to coincide with key dates in the calendar such as the Melbourne Cup, as well as regular shows featuring well-known acts such as Kevin 'Bloody' Wilson.

POSTAL ADDRESS

Bomaderry Bowling Club
Locked Bag 3008, Nowra, NSW 2541

PHONE: (02) 4421 2733

EMAIL (FUNCTIONS, ADMINISTRATION):
catering@bomaderrybowling.com.au

WEBSITE:
www.itsmyclub.com.au/bomaderry-bowling-club-2-2/

EMAIL (BOWLING): bowls@bomaderrybowling.com.au

SOCIAL MEDIA: www.facebook.com/BomaderryBowls

BERRY BOWLING CLUB

Berry Bowling Club is located at the north entrance to Berry on the banks of Broughton Creek.

The club is the oldest bowling club in the southern district, having celebrated its centenary in 2012. It has a deserved reputation for being a family club and welcomes bowlers of all ages.

As you'd expect from a club with such a rich history, Berry Bowling Club has seen its share of highs and lows. In recent years, however, the club has gone from strength to strength. Major extensions have transformed the venue into a modern, welcoming facility.

As part of the itsmyclub group – which includes Nowra Golf Club, Berry Bowling Club, and Bomaderry Bowling Club – the club benefits from a combined membership of over 10,000, with strong support from both bowlers and social members alike.

The club has two rinks and members enjoy a full bowling calendar throughout the season. The ladies bowl on Tuesday and Thursday, the men on Wednesday and Saturday is mixed. Members and guests can enjoy social bowling outside competition times and coaching is available to members.

Men's and women's teams from Berry represent the club in the local pennants and many members play in the District Championships as well as numerous tournaments throughout the region.

The club hosts various social events as well as its annual prestige singles and pairs competitions. These events attract the cream of Australia's bowlers from the tried and proven champs to the increasing band of young guns.

Clubhouse facilities are equally impressive. The spacious clubhouse offers a comfortable home from home to members of Berry Bowling Club and their guests.

But it is also a social hub for the local community, who are equally welcome to enjoy a delicious meal in air-conditioned comfort in our restaurant, or pop in and catch up with friends while enjoying a coffee, a beer or a glass of wine.

Open Wednesday to Sunday for lunch and dinner, the Chinese Restaurant is a very popular dining spot for visitors and locals. The menu can be viewed on the club website, www.itsmyclub.com.au/berry-bowling-club, and after you've stopped licking your lips, get on the phone and book a table! The bar stocks a good range of wines to complement the food.

Berry Bowling Club is also an outstanding function venue. The club has one large function room and one private meeting area. There is no charge to hire the meeting area and audio-visual aids are available at no extra cost – you can't get better value than that!

CONTACT INFORMATION

Berry Bowling Club, 140 Queen Street, Berry, NSW 2535

Phone: (02) 4464 2995

Website: www.itsmyclub.com.au/berry-bowling-club

Social Media: Search for Berry-Bowling-Club on Facebook



NOWRA
Golf & 
Recreation Club

ITSMYCLUB.COM.AU